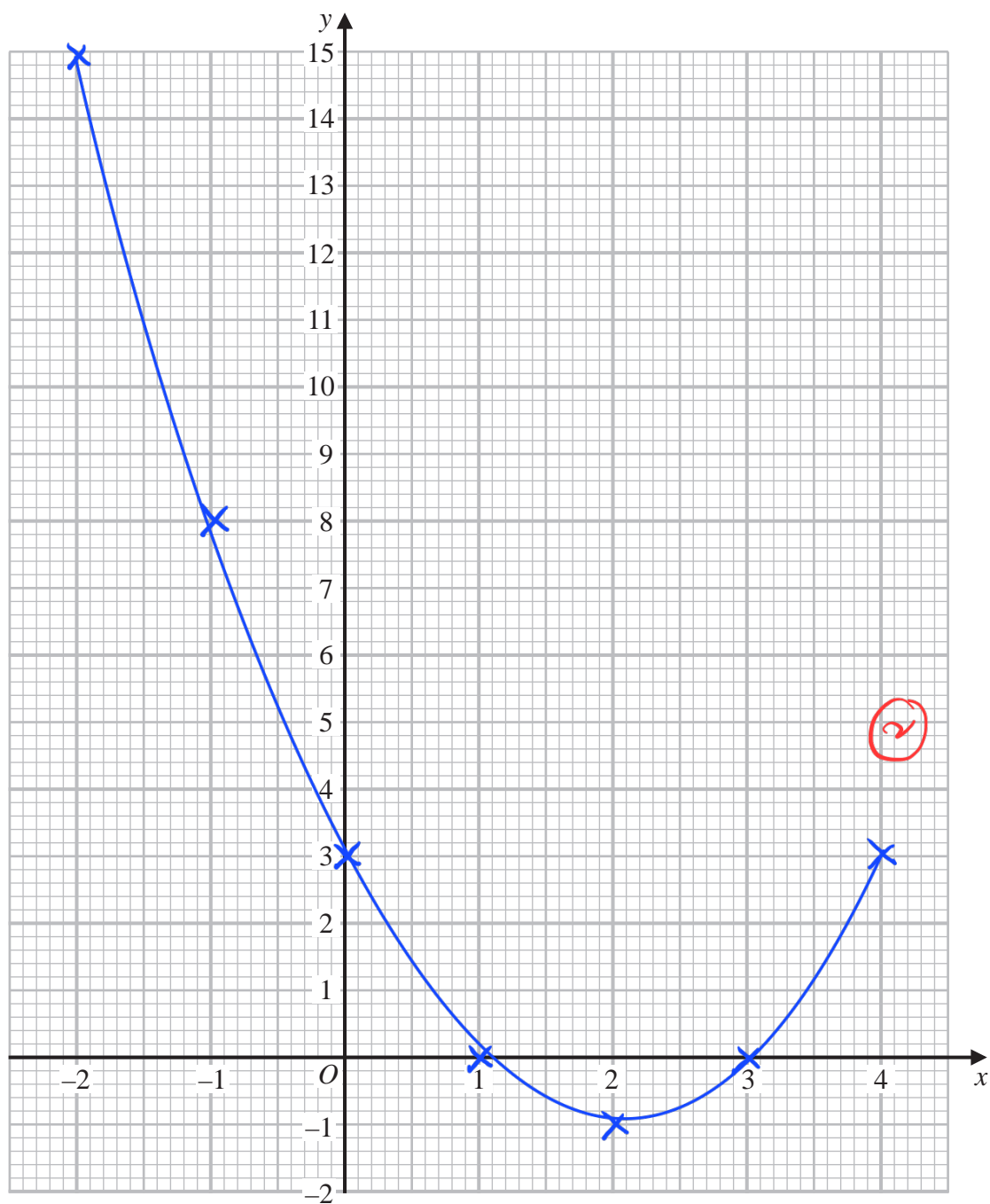


1 (a) Complete the table of values for $y = x^2 - 4x + 3$

x	-2	-1	0	1	2	3	4
y	15	8	3	0	-1	0	3

(2)

(b) On the grid, draw the graph of $y = x^2 - 4x + 3$ for values of x from -2 to 4



(2)

(Total for Question 1 is 4 marks)

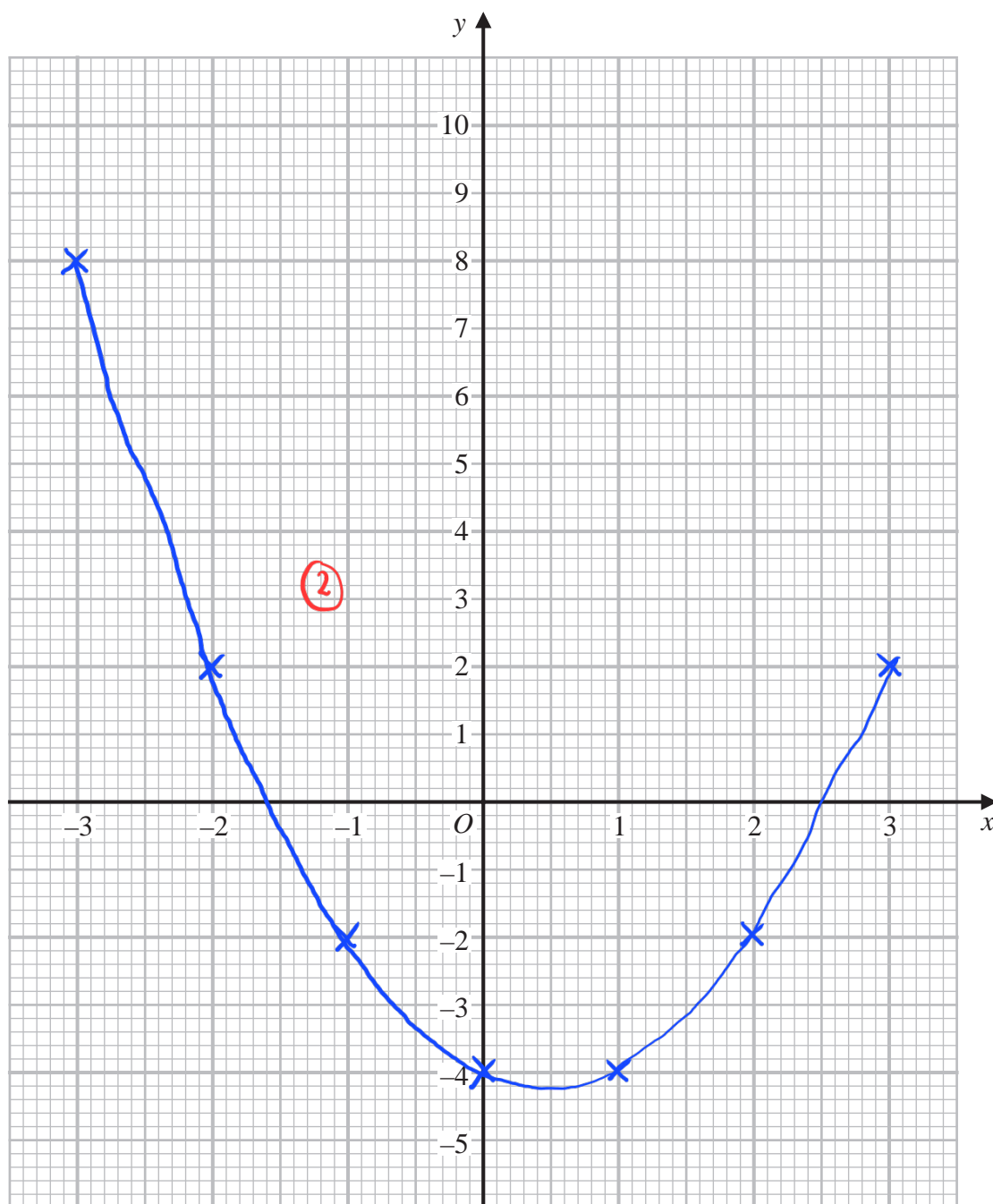
2 (a) Complete the table of values for $y = x^2 - x - 4$

x	-3	-2	-1	0	1	2	3
y	8	2	-2	-4	-4	-2	2

(2)

(2)

(b) On the grid below, draw the graph of $y = x^2 - x - 4$ for values of x from -3 to 3



(2)

(Total for Question 2 is 4 marks)